



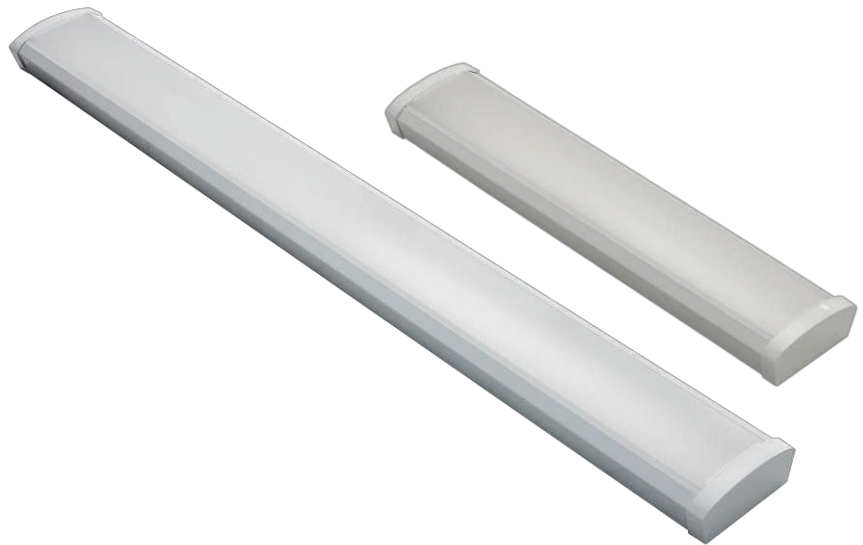
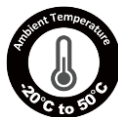
115LPW.

Compact size, Minimalist styling.

2ft & 4ft available.

Field-adjustable Power and CCT.

Sensor and EM solution available.



Specifications and accessories

UL Listing:

Suitable for damp locations

LEDs:

Long-life, high-efficacy, micro-power LEDs **Lifespan:**

Lumen Maintenance, L70 > 100,000 hours **Housing and Lens:**

Steel sheet, Frosted PMMA lens

Finish:

Long lasting white with high durability **Ambient Operating**

Temperature:

-20°C (-4°F) to 50°C (122°F)

Driver:

Driver includes dimming control wiring for 0-10V dimming

systems. The dim-to-off voltage threshold of optional 12V AUX integrated driver ranges from 0.1V to 0.5V.

Mounting:

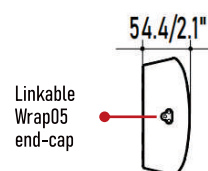
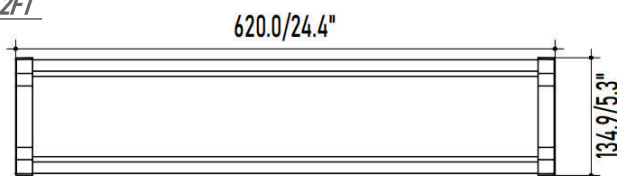
- Surface mounting (standard)
- Suspension mounting (only for linkable version) **Optional**

accessories (purchased separately):

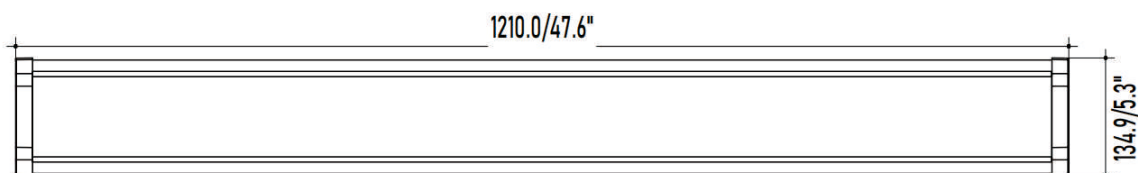
- Chain suspension kit
- Cable suspension kit
- Wire connector
- Plug-in linking cord

Dimensions

2FT



4FT



Selectable table

| Catalog No. | Input Wattage | Lumens Rated | Efficacy Rated | CCT |
|---|---------------|----------------|----------------|----------------------------------|
| ETLWRAP05-2FT/NF/24/20/16/YDM/CCT 83550 | 24/20/16 | 2760/2300/1840 | 115 | Selectable, 3500K&4000K&5000K |
| ETLWRAP05-4FT/NL/48/40/32/YDM/CCT 83550 | 48/40/32 | 5520/4600/3680 | 115 | |

Ordering Information

ORDERING EXAMPLE:

ETLWRAP05-4FT/NL/48/40/32/YDM/CCT 83550 (A3+B3)

| Product Series | Length | Module type | Power | Dimming | CCT | Options |
|----------------|------------|--------------------------|---|-------------------------|---|--|
| ETLWRAP05 | 4FT 2FT | NL NF (Defined by ET) | 48/40/32 24/20/16 (Switchable Power) ... | YDM 0-10V dimming | CCT 83550 80 CRI, 3500K, 4000K, 5000K switchable | EM MS 120-347 A3 B3 Battery Backup Sensor Optional Input voltage Driver code LED code |