



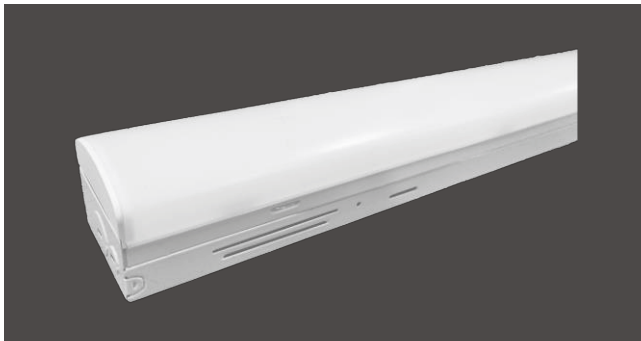
Top features

- Luminous part Integrated.
- Field-adjustable Power and CCT.
- Sensor and EM solution ready.



Benefits You Need

Faster mounting and on-site installation of EM or sensor thanks to the integrated design of luminous part.
Forget thermal expansion and contraction of lens.



Smart is in your hand

Sensor plug and play thanks to the U-Smart sensor bracket.
Both standalone sensor and Bluetooth sensor are available.



Specifications

UL Listing:

Suitable for damp locations

LEDs:

Long-life, high-efficacy, micro-power LEDs **Lifespan:**
Lumen Maintenance, L70 > 100,000 hours

Dimming Driver:

Driver includes dimming control wiring for 0-10V dimming systems.
The dim-to-off voltage threshold of optional 12V AUX integrated driver ranges from 0.1V to 0.5V.

Housing:

Sheet metal stamping

Operating temp range

-20°C/-4°F to 50°C /122°F

Finish:

Long lasting white with high durability

IESNA LM-79 & IESNA LM-80 Testing:

Ever-tieLED luminaires have been tested based on IESNA LM-79 and LM-80 by a third-party laboratory

Mounting:

Surface mounting ready.

Optional accessories(purchased separately):

- Surface mounting kit
- Cable suspending mounting kit
- V-hooks & Chain suspending mounting kit
- Row connector
- Right angle connection kit
- Wire guards, square profile or arc profile optional

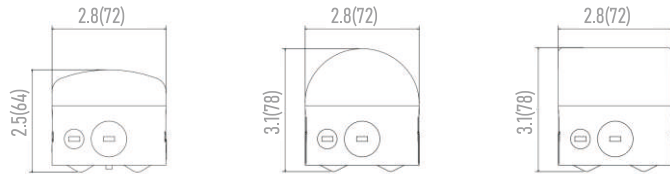
Dimensions

Length, in.(mm)



Size	Length
8ft	94.2(2392)
4ft	47.3(1202)
2ft	22.2(564)

Height and width, inch(mm)



Weight, lb.(kg)

8ft	4ft	2ft
8.6(3.9)	4.4(2.0)	2.6(1.2)

Selectable table

Field-adjustable Power & CCT

Catalog No.	Input Wattage	Lumens Rated	Efficacy Rated	CCT
ETLSN-W-2FT/NE/25/20/15/YDM/CCT 83550(A3+B7)	25/20/15	3250/2600/1950	130	Selectable, 3500K&4000K&5000K
ETLSN-W-4FT/NG/40/30/25/YDM/CCT 83550(A3+B7)	40/30/25	5200/3900/3250	130	Selectable, 3500K&4000K&5000K
ETLSN-W-4FT/NH/45/38/34/YDM/CCT 83550(A3+B7)	45/38/34	5850/4940/4420	130	Selectable, 3500K&4000K&5000K
ETLSN-W-8FT/NF/65/60/55/YDM/CCT 83550(A3+B7)	65/60/55	8450/7800/7150	130	Selectable, 3500K&4000K&5000K
ETLSN-W-8FT/NH/90/75/65/YDM/CCT 83550(A3+B7)	90/75/65	11700/9750/8450	130	Selectable, 3500K&4000K&5000K

Ordering Information

ORDERING EXAMPLE:

ETLSN-W-4FT/NH/45/38/34/YDM/CCT 83550(A3+B7)(MS,EM) (SR1,SR2,CS3)

Product Series	Length	Module type	Power	Dimming	CCT	Other Items/Options
ETLSN-W	4FT	NH	45/38/34	YDM	CCT 83550	(A3+B7)(MS,EM)
ETLSN-W	2FT 4FT 8FT	NH NF NG NE (Defined by ET)	45/38/34 90/75/65 (Switchable Power) ...	YDM 0-10V dimming	CCT 83550 80 CRI, 3500K, 4000K, 5000K switchable	EM MS 120-347 A3 B7 SR1 SR2 CS3 Battery Backup Motion sensor Optional input voltage Driver code LED code Lens code Lens code Lens code