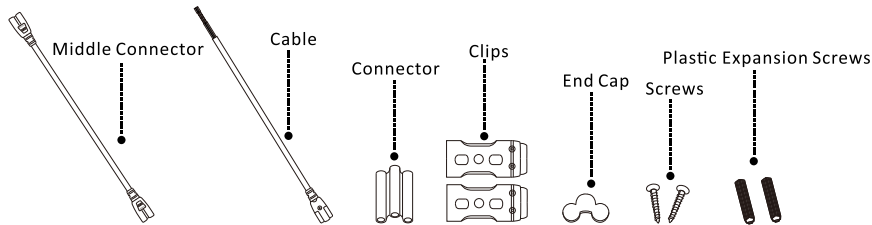


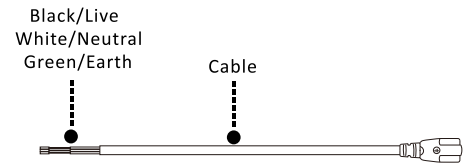
## Installation Guide for Surface Mounted LED Tube Integrated T8

This is LED surface mounted light. Please take the time to read this quick installation guide. The guide contains important information and notes regarding installation and operation.

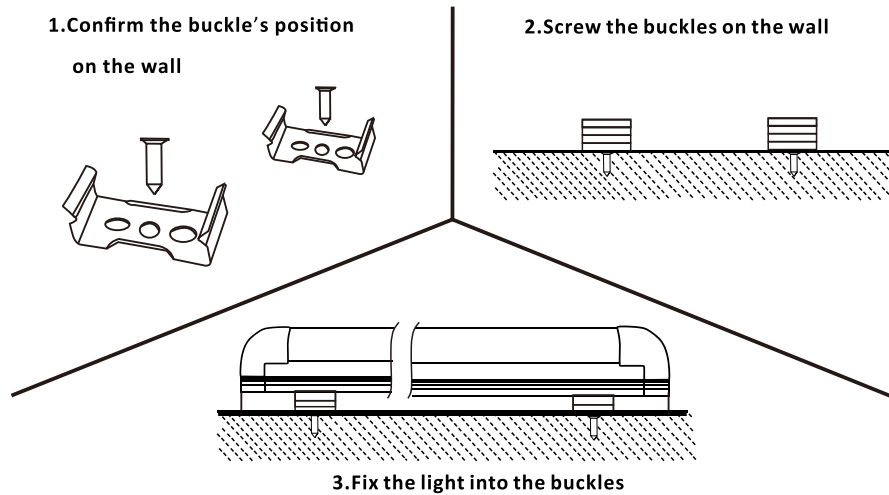
### 1. Accessories bag includes:



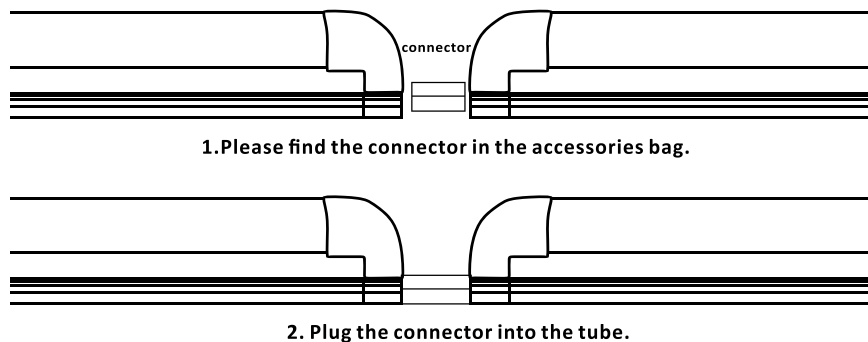
### 2. Cable connection instruction



### 3. Installation Instructions



#### Connection Installation



#### Notes:

For safety standard, in a row please do not connect more than 240w.

#### Warnings

End cap: Please insert the END CAP at the end of last connection lamp as isolation protection.

This product must be installed in accordance with the applicable installation code by a person familiar with the construction and operation of the product and hazards involved.

Risk of fire or electric shock. LED tube installation requires knowledge of luminaries' electrical systems. If not qualified, do not attempt installation. Contact a qualified electrician.

Do not use with dimmers.

Small noises when shaking does not affect the quality.